

## BALMS Avdelmate 2 Piece Breakstem Rivet

2 piece system - Aluminium body - Aluminium stem - Aluminium tubular component  
4.8 mm (3/16") - 6.4 mm (1/4")

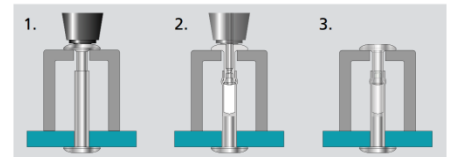
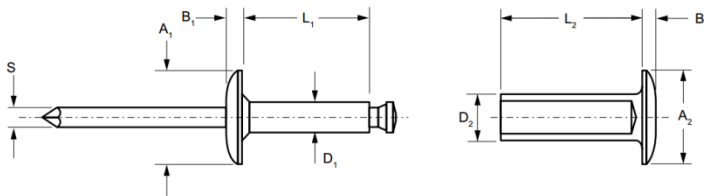
### Features

- A two-piece breakstem fastener consisting of a rivet and tubular section which provide a wide grip range, controlled clamp and a large bearing area on both sides of the application
- Ideal for use in thin sheet, soft, brittle or low strength materials.
- Extra-wide grip range from 15.8 mm to 98.4 mm (5/8" to 3-7/8")
- Large bearing area against both sides of the application spreads the tail bearing load/clamp load on the rear sheet to prevent damage
- Clamps tightly and securely without crushing parent material
- Excellent hole fill via radially expanded rivet body for a strong and vibration resistant joint
- Rivet stem retained in tubular component avoids loose stems
- Low profile head style on both sides of the application for a neat appearance



### Material

- Body: Aluminium, clear alodine
- Stem: Aluminium, natural
- Tubular component: Aluminium, clear alodine



Part No.	Size ø	Grip Range		Hole Size	øD <sub>1</sub>	L <sub>1</sub>	øA <sub>1</sub>	B <sub>1</sub>	øS	øD <sub>2</sub>	L <sub>2</sub>	øA <sub>2</sub>	B <sub>2</sub>	Tension (typical) kN													
		nom.	min.												max.												
BALMS-06BP-12	4.8 (3/16")		15.88	19.05	6.4	3.18	13.4	9.53	1.50	1.93	4.78	30.5	9.53	1.45	N/A												
BALMS-06BP-14			17.48	22.23																							
BALMS-06BP-17			22.23	27.00																							
BALMS-06BP-20			27.00	31.75																							
BALMS-06BP-23			31.75	36.53																							
BALMS-06BP-26			36.53	41.28																							
BALMS-06BP-29			41.28	46.05																							
BALMS-06BP-32			45.05	50.80																							
BALMS-06BP-35			50.80	55.58																							
BALMS-06BP-38			55.58	60.33																							
BALMS-08BP-12	6.4 (1/4")		15.88	19.05	7.9	4.75	15.5	15.88	2.41	2.90	6.35	46.3	15.88	2.41	1.11												
BALMS-08BP-14			19.05	22.23																							
BALMS-08BP-18			22.23	28.58																							
BALMS-08BP-22			28.58	34.93																							
BALMS-08BP-26			34.93	41.28																							
BALMS-08BP-30			41.28	47.63																							
BALMS-08BP-34			47.63	53.98																							
BALMS-08BP-38			53.98	60.33																							
BALMS-08BP-42			60.33	66.68																							
BALMS-08BP-46			66.68	73.03																							
BALMS-08BP-50			73.03	79.38																							
BALMS-08BP-54			79.38	85.73																							
BALMS-08BP-58			85.73	92.08																							
BALMS-08BP-62			92.08	98.43																							